

Geography

- Mountains, Earthquakes and Volcanoes
Locate mountain ranges
Know highest mountains in the UK and the world
Explain climate and land use of mountain Ranges
How volcanoes are formed
Label an active volcano
Locate main volcanoes
Causes of an earthquake
Study of an earthquake

WHAT CAUSES MOUNTAINS, VOLCANOES, AND EARTHQUAKES?

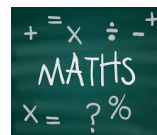


English

- Class novel: Kensuke's Kingdom
- Fiction: other cultures (myths)
- Fiction: Haiku, other genres linked to mountains topic and class novel.
- Non-fiction: Letter writing
- Non-fiction: Persuasive writing (travel brochure for a mountain resort)
- Spelling
- Sentences
- Grammar and punctuation

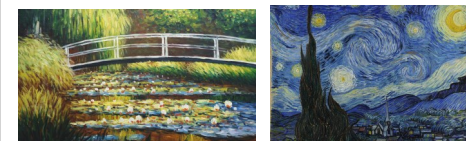
Maths

- Number & place value
- Addition & Subtraction
- Multiplication & Division
- Fractions & Decimals
- Measurement – length, perimeter & area
- Multiplication (times tables practise)
- Mental arithmetic

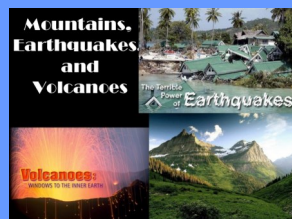


Art

- Landscapes
Famous artists—Monet and Van Gogh
Pastels, watercolours, inks
Mountain art work



Extreme Earth



PE

- Invasion games (football)
- Striking and fielding games
- Daily mile
- Take 10 activities



Science

- Solids, Liquids and Gases, Rocks and Fossils
Characteristics of liquids, solids and gases
Compare liquids, solids and gases
Changing state
Evaporation
Different types of rocks
How fossils are formed



Music

- Following Charanga Scheme of Work
- Mamma Mia!
- Glockenspiels
- Interrelated dimensions of music—pulse, rhythm, pitch, tempo, dynamics, timbre, texture, structure



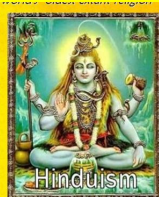
Computing

- Spreadsheets
- Logo



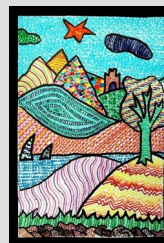
PSHE + RE

- What does it mean to belong to a religion—Hinduism?
- UC Salvation: Why do Christians call the day Jesus died Good Friday?
- PHSE—
SEAL topics—Going for Goals, Good to be me



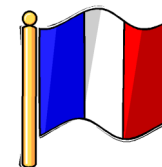
The challenge:

Use patterns to create an abstract mountain landscape



MFL

- Where we live
Directions
Cities and countries
- Food
Likes and dislikes
Cafe



Extreme Earth